

# ***MOSS UI Development***

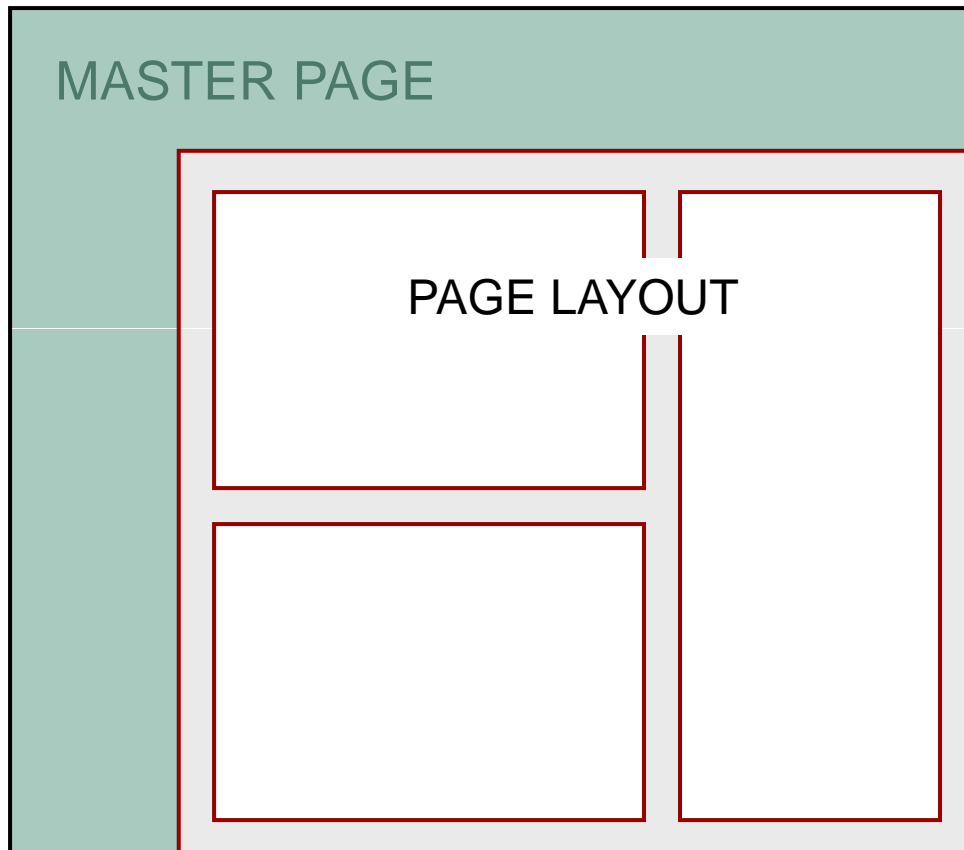
*Applying custom visual design to a MOSS website using Master Pages and CSS*

## **06: Creating a Custom Page Layout**

February 2008

*e.magination*

# Page Layout



- A page layout dictates how content will be displayed in a page, and how editing of the content will be handled.
- A page layout is like a mini master page. It can be shared by multiple pages.
- A page layout is assigned at the page level.



# Create a New Page Layout

1. Open the MOSS website URL in a browser.
2. From the root site, go to *Site Actions > Modify All Site Settings > Galleries > Master pages and page layouts*
3. In this gallery, click *New > Page Layout*
4. In the Page Layout Settings, choose the Content Type. (If a custom content type has not been created, you can use *Article Page*.)
5. Name the page layout with the same prefix you have used throughout the project.
6. The title will show up in various lists, so it should be prefixed as well.
7. After completing the settings, click *OK*.

Content Type Group  
Page Layout Content Types

Content Type Name  
Article Page

Description:  
Article Page is a system content type template created by the Publishing Resources feature. It is the associated content type template for the default page layouts used to create article pages in sites that have the Publishing feature enabled.

[Create a new site content type](#)

---

URL Name:  
EMAG\_Homepage.aspx

Title:  
EMAG Homepage Layout

Description:  
Two column layout.



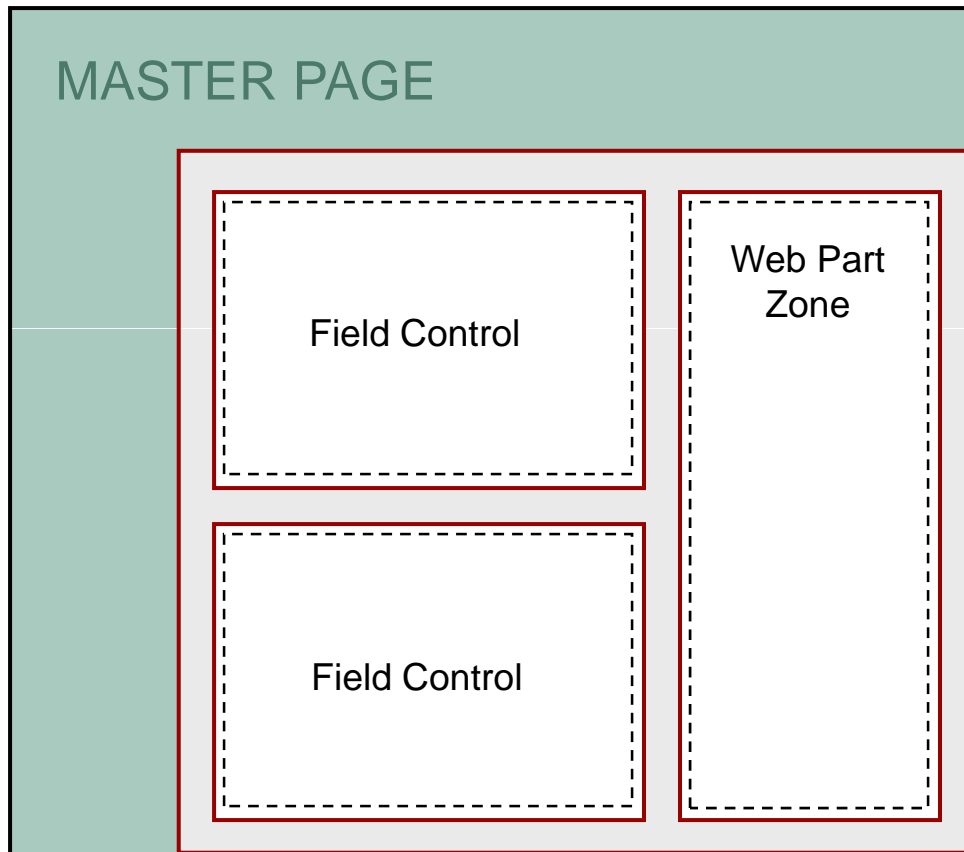
# Incorporating the HTML

1. After you create the page layout via the browser, go to the same gallery in SPD: *\_catalogs/masterpage (Master Page Gallery)*
2. Open your new page layout in code view.
3. Open your local HTML template and copy any code that is relevant to the content area and/or page layout.
4. Paste the code between the opening and closing tags for *PlaceHolderMain*.

```
<asp:Content ContentPlaceholderID="PlaceHolderMain" runat="server">  
  ((PASTE CODE HERE))  
</asp:Content>
```

5. You may also paste additional code into other ContentPlaceholder areas were relevant. (For example, inside a custom ContentPlaceholder.)
6. Save your changes.

# Field Controls and Web Part Zones

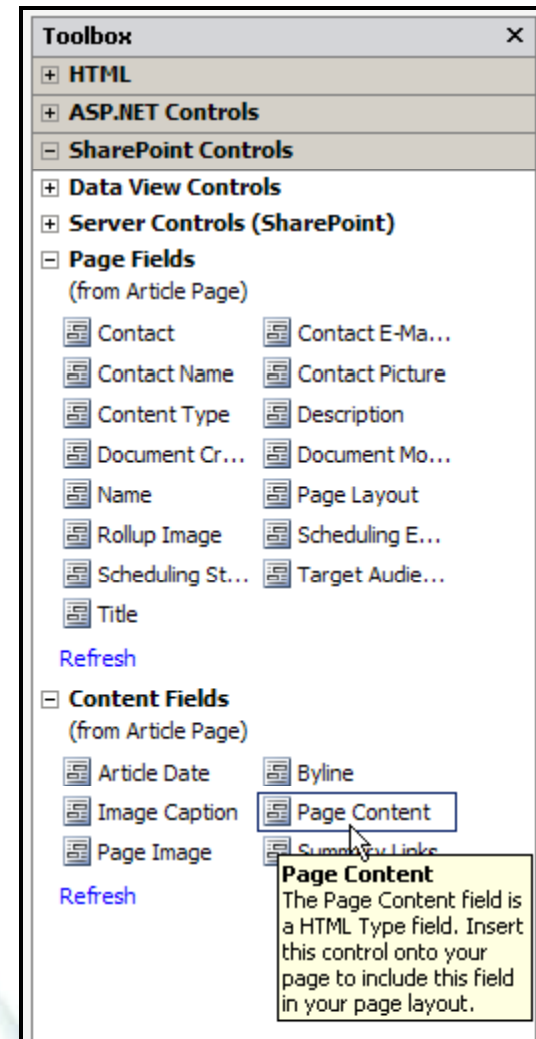


After the structural HTML is in place, you can add **Field Controls** and **Web Part Zones** to your page layout.



# Adding a Field Control

- Field controls allow a user to edit content and data directly in a page.
- The content type associated with the page layout determines which field controls are available for that page layout.
- In SPD, you will see Page Fields and Content Fields in the SharePoint Controls Toolbox. A descriptive popup will tell you more about each field.
- Drag and drop the fields into your page layout code where needed.

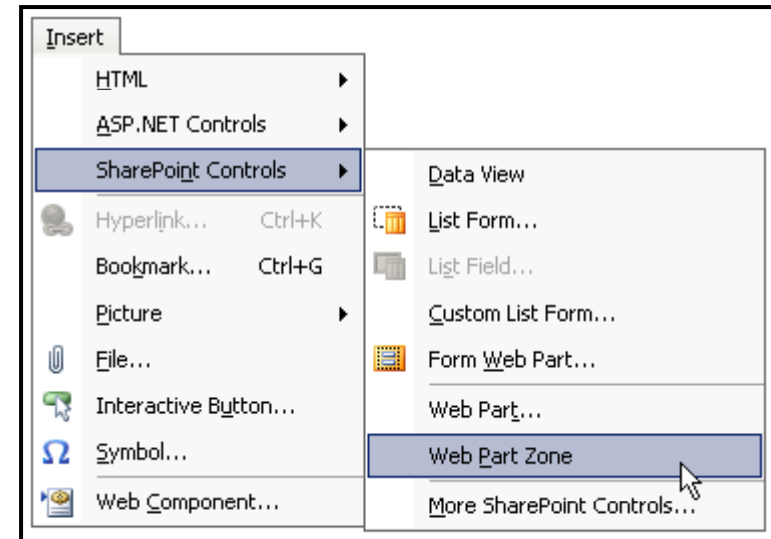


# Adding a Web Part Zone

Web Part Zones are areas in the page where a user may add Web Parts via the browser.

Use SPD to insert Web Part Zones into your page layout.

1. With the file open in code view, place your cursor where you want the Web Part Zone to go.
2. Go to the *Insert* menu and select *SharePoint Controls > Web Part Zone*.
3. After the Web Part Zone appears in the code, change the **id** and **title** properties as needed.



END of 06:  
Creating a Custom Page Layout

February 2008

*e.magination*